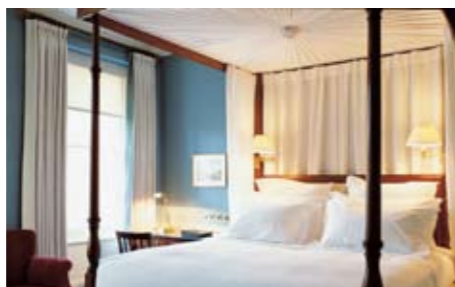


Royal Park Hotel, Hyde Park

This is thinking space - an unobtrusive, well-serviced, gentle-paced stopover. The Royal Park Hotel on the edge of Hyde Park delights with quietness.



Comprised of three Georgian grade II listed townhouses built in 1842, The Royal Park is a classic paean to elegance. Period fireplaces and chandeliers greet you as you enter the lobby from the quiet, tree-lined street.

Accommodation in this elegant London hotel is spacious; rooms and suites offer four poster Bellestrata beds creating a delicate, cocooning intimacy, accented with Italian freda linen, handwoven Welsh woollen blankets and goose feather pillows.

Bathrooms are all-marble affairs. Furniture is made from solid dark woods and curtains are handmade. Colours are elegant, drawn from a Regency palette of Beddington Blue, Bone, Cream and Ointment Pink. Period features include Chandeliers and fireplaces

and lend a timeless air to the hotel. Two lifts provide easy access to the hotel's accommodation. The hotel offers a full technological complement including complimentary WiFi in public areas.

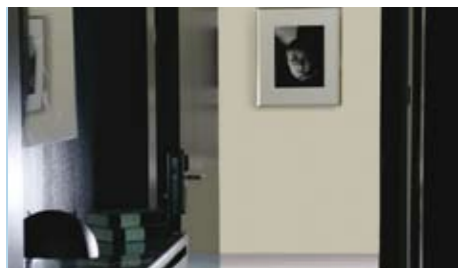
Having arrived in a hurry, caught a brief run through the international papers in the lobby, sipped a drink, and slipped out again, I might have expected to be on edge; but that's not the atmosphere of the Royal Park, tranquillity is the key. So unaccustomed to rest and quiet have we become, that a moment to sit back and enjoy being at home, from home, is enough.

My dinner guests arrived: "We had an analyst over from the States. We booked him in here, but I didn't realise it was so nice."

Perfectly placed in Central London. On the edge of Hyde Park, Westbourne Terrace and Marble Arch London hotel The Royal Park is centrally located in the quiet tree-lined area of Westbourne Terrace, bordering Hyde Park and Marble Arch. Piccadilly lies east of the hotel, Hyde Park to its south. Heathrow airport is a 45-minute car journey, or 15 minutes by train to Paddington, also close to the property. Gatwick operates from Victoria station, a ten minute taxi drive away.

The Royal Park Hotel:

3 Westbourne Terrace, Lancaster Gate, Hyde Park, London W2 3UL
Tel. 44 (0)20 7479 6600
<http://royalpark.franklynhotels.com>



Hotel Verta - London Heliport

Hotel Verta lands at The London Heliport this autumn and will be the first integrated hotel heliport solution in the world. Part of von Essen hotels collection, Hotel Verta is the group's first London hotel and the first hotel in the Metropolitan Set. Everything at Hotel Verta, from the unique location on the Thames, to the stunning architecture and cutting edge technology, is there to ensure that guests, whether business or leisure, have their every expectation exceeded. The hotel's design, inspired by the Halcyon days of aviation, combines timeless elegance with modernity.



Sermoneta Gloves, Burlington

Sermoneta, the iconic global gloves brand, opened its new site in the prestigious Burlington Arcade in Mayfair, London.

Made exclusively in Italy by artisans, Sermoneta produce the highest calibre of gloves using only the finest leather, suede, silk and cashmere. With 2 collections each year, Sermoneta is a name that has become as synonymous with variety as it has quality, with over 70 brilliant hues and many linings. A fitting service is provided throughout the store to ensure patrons find the perfect pair.



Penthouse Perfect St James

Owned by specialist luxury hotel operator, the Althoff Collection, based in Germany and with hotels across Europe, St James's Hotel and Club, is located in a quiet cul-de-sac close to Piccadilly and near the prestigious Mayfair area. St James's really is a hidden gem ideally situated within central London. With the coolest Penthouse suites and best terraces in London, the hotel boasts stylish, sleek, contemporary interiors finished with handmade silk wallpaper, black lacquered furniture, handcrafted Murano glass chandeliers and polished natural stones in the bathroom. www.stjameshotelandclub.com

TALK BEHIND PEOPLE'S BACKS.

THE ONLY AIRLINE WITH SEAT-TO-SEAT CHAT
THIS IS HOW TO FLY.

